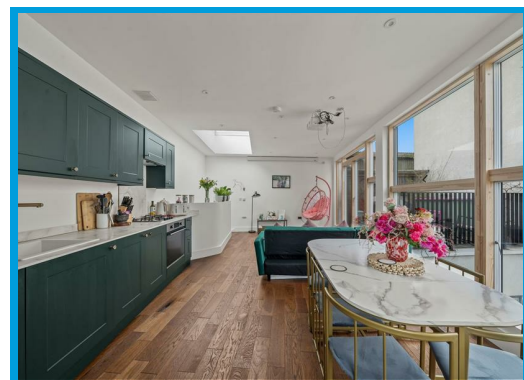
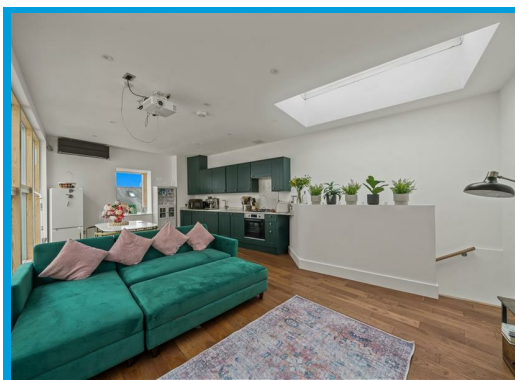




Walnut Tree Close, Guildford, GU1 4UB

Guide Price £500,000

Modern and private 2-bedroom home in the heart of Guildford, featuring spacious open-plan living, a private terrace, and allocated parking. Quietly tucked away yet just a short walk to the town centre and train station.



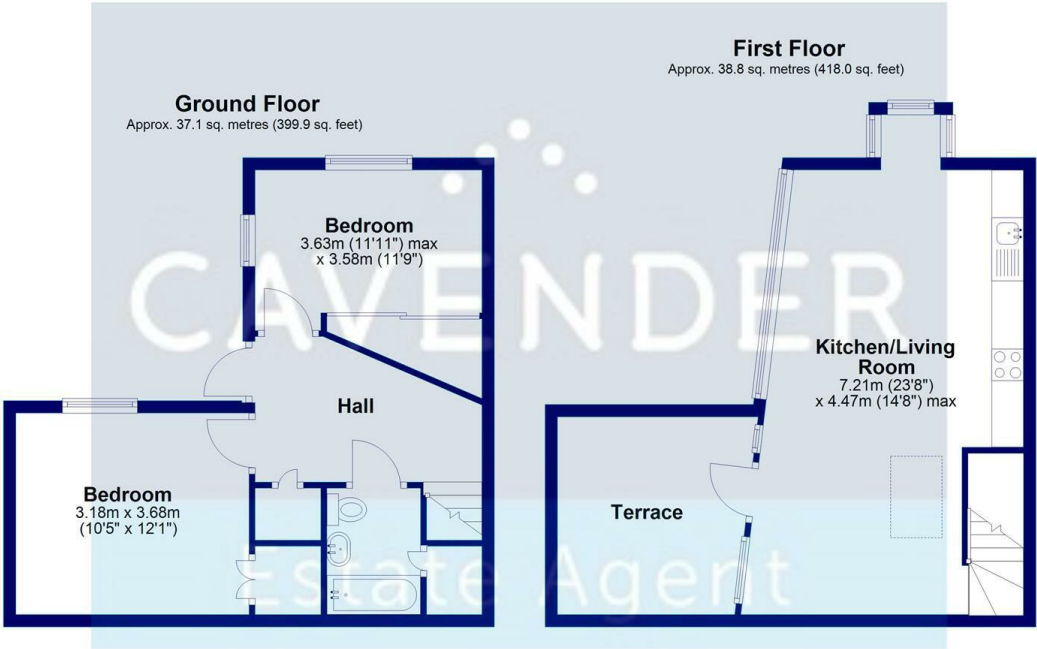
Description

Tucked away in a peaceful and secluded position just moments from Guildford Town Centre, this modern and private 2-bedroom home in the heart of Guildford offers a rare combination of style, space, and convenience.

Built in 2012, the property has been thoughtfully designed with contemporary living in mind. It features two large double bedrooms, offering generous accommodation ideal for professionals, couples, or small families. The spacious open-plan kitchen and living room is the heart of the home—bright, airy, and perfect for both entertaining and everyday living, with an abundance of natural light throughout.

A private terrace provides the perfect outdoor retreat for relaxing, while the home’s unique position—set back from the main road—offers a sense of tranquillity rarely found so close to the town centre. The property also benefits from allocated parking, adding further convenience in this prime location.

Situated within easy walking distance of Guildford Train Station and the town’s excellent range of shops, restaurants, and amenities, this truly is a hidden gem offering the best of both privacy and urban living.



Total area: approx. 76.0 sq. metres (817.9 sq. feet)

